



# MONTHLY MEMBERSHIP PROGRESS REPORT

District 325B2

Results as of: 05/31/2018

GMT: KHAGENDRA SITLAULA

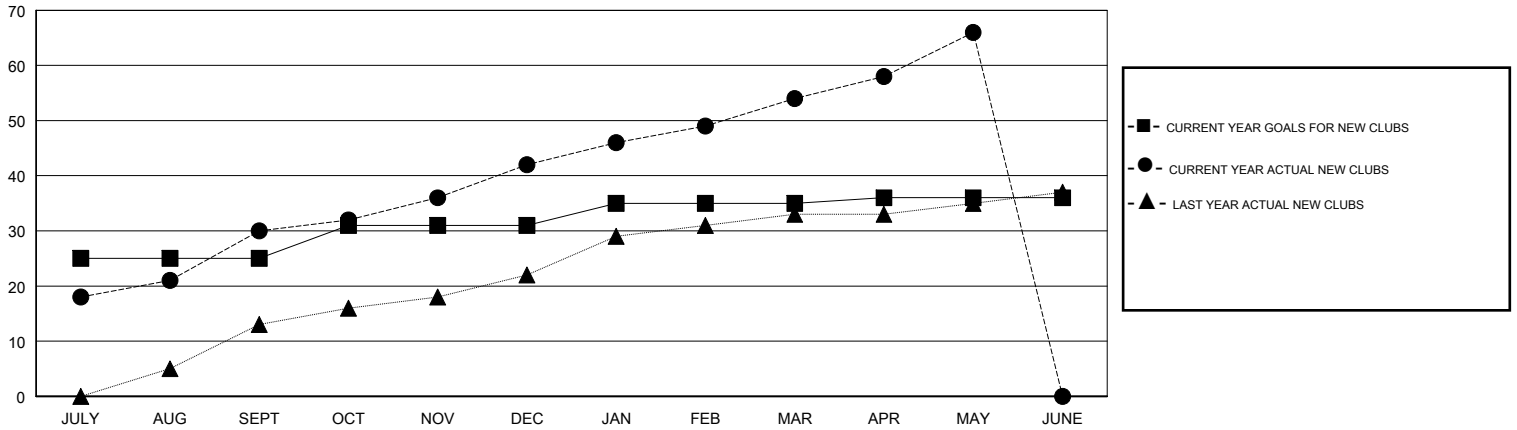
LOCATION NEPAL

GMT CA

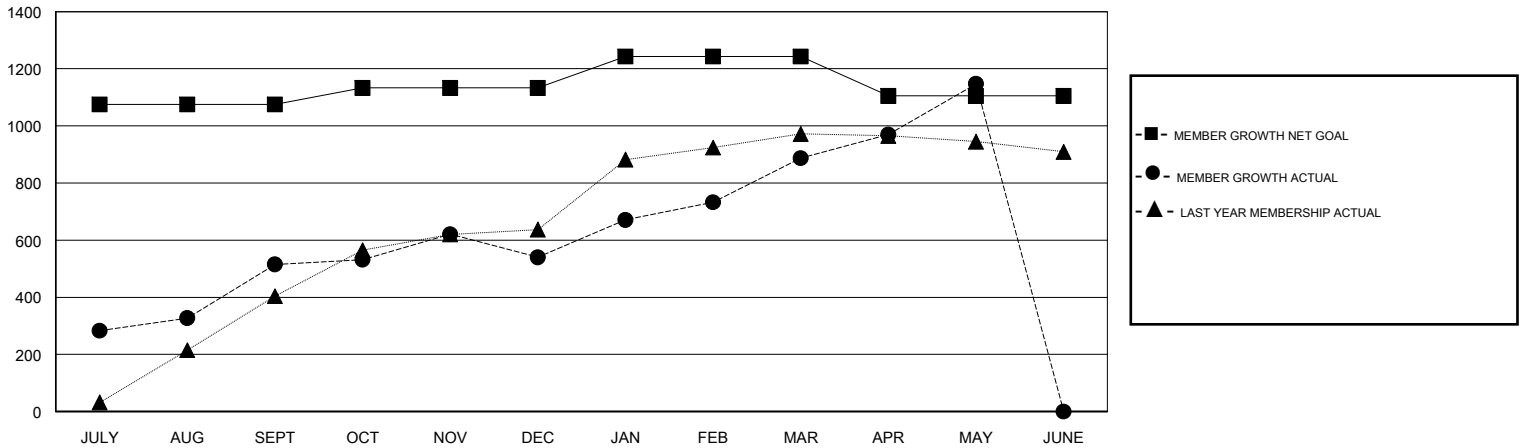
Clubs			
RESULTS FOR 2017-2018			
QUARTER	NEW CLUB GOAL	NEW CLUBS	DROPPED CLUBS
JULY/AUG/SEPT	25	30	4
OCT/NOV/DEC	6	12	5
JAN/FEB/MAR	4	12	0
APR/MAY/JUNE	1	12	1

Members			
RESULTS FOR 2017-2018			
QUARTER	MEMBER GROWTH NET GOAL	MEMBER GROWTH ACTUAL	DROPPED MEMBERS ACTUAL (including transfers)
JULY/AUG/SEPT	1,075	845	317
OCT/NOV/DEC	58	411	365
JAN/FEB/MAR	110	601	249
APR/MAY/JUNE	-138	392	122

GOALS AND ACTUAL NEW CLUBS CUMULATIVE



GOALS AND ACTUAL MEMBERS CUMULATIVE



DROPPED CLUBS: 10	201 CLUBS OF 364 ADDED 1 OR MORE NEW MEMBERS	<u>GENDER DISTRIBUTION</u>	
DROPPED MEMBERS		MALE	7,036 (76.91%)
DECEASED	5	FEMALE	2,112 (23.09%)
CLUB CANCELLED	180	Women Percentage Fiscal Year Goal: 22%	
OTHER	868	TOTAL FAMILY UNIT MEMBERS	4,765
TOTAL	1,053	FAMILY MEMBERS PAYING HALF DUES	2,807

[CLICK HERE FOR CUMULATIVE MEMBERSHIP DATA](#)